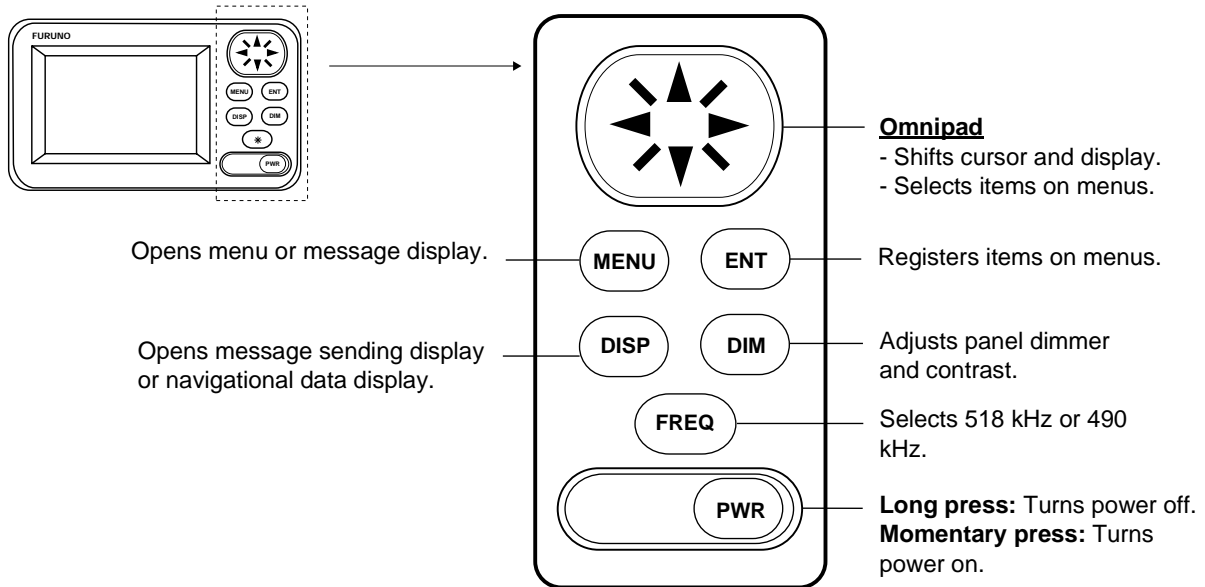


NX-300 NAVTEX RECEIVER Operator's Guide

The purpose of this guide is to provide the basic operating procedures for this equipment. For further details, see the Operator's Manual.



Message description

SAR: Displayed when message type D is displayed.

NEW: Displayed when message is shown for the first time.

AUTO: Displayed when you select AUTO mode in Station Selection.



Rx: Lights when message is being received.

SAR receiving: Lights (and the alarm sounds) when message type D is being received. To silence the alarm, hit any key.

WARNING: Appears when message type A, B or L is shown.

WARNING receiving: Lights (and the alarm sounds) when message type A, B or L is received.



BATTERY icon: Displayed when battery voltage is low (battery needs to be replaced).

Scroll bar: Shows location in message currently displayed



Turning the Power On/Off

Turning on: Press the **POWER** key.

Turning off: Press the **POWER** key about three seconds.

Adjusting Dimmer and Contrast

1. Press the **DIM** key to show the dimmer and contrast setting window.



2. Press the up arrow or down arrow to adjust the panel dimmer.
3. Press the right arrow or left arrow to adjust the contrast.
4. Press the **ENT** key to close the window.

Choosing Stations to Receive or Ignore

Choose the stations to receive or ignore, automatically or manually.

1. Press the **MENU** key to open the menu.
2. Choose STATION SELECTION.
3. Press the **ENT** key to show the MODE window.
4. Choose AUTO or MANUAL.
5. For AUTO, go to step 6. For MANUAL, do the following:
 - a) Press the **ENT** key to show the STATION SELECTION menu.
 - b) Choose a station.
 - c) Press the **ENT** key to show the RECEIVE/IGNORE window.



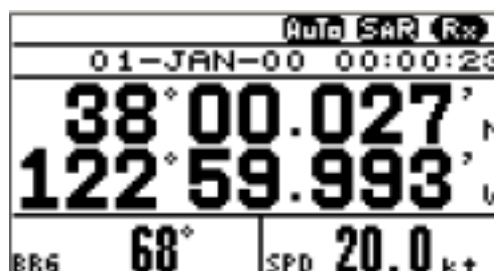
- d) Choose RECEIVE (or IGNORE as appropriate).
6. Press the **ENT** key.
 7. Repeat steps b) to d) to receive (or ignore) other stations.
 8. Press the **MENU** key to close the menu.

Choosing Messages to Receive or Ignore

1. Press the **MENU** key to open the menu.
2. Choose MESSAGE SELECTION.
3. Press the **ENT** key to show the MESSAGE SELECTION menu.
4. Choose a message.
5. Press the **ENT** key to show the RECEIVE/IGNORE window. (See figure at bottom of left-hand column.)
6. Choose RECEIVE or IGNORE as appropriate.
7. Press the **ENT** key.
8. Repeat steps 4 to 7 to receive or ignore other message types.
9. Press the **MENU** key to close the menu.

Displaying Navigation Data

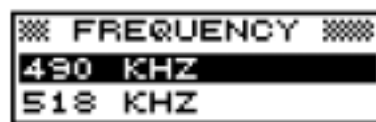
1. Press the **DISP** key to display the receiving message log.
2. Press the **DISP** key again to show navigation data.



3. Press the **DISP** key again to re-display the receiving message log.

Selecting Receive Frequency

1. Press the **FREQ** key to show the frequency window.



2. Choose appropriate frequency.
3. Press the **ENT** key to close the window.